


est 1979

 **Jeremy  
Leaf & Co.**



Rosemary Avenue, LONDON

£950 Per Month

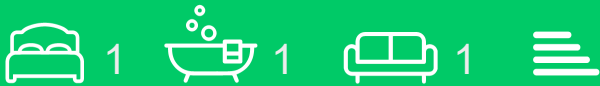
- Includes all Bills as listed
- Available 1st April
- Furnished
- Shared Reception
- One Double bedroom
- Shared Kitchen
- Shared bathroom only with one room
- Shared Garden

863 High Road, London, N12 8PT  
020 8446 4295

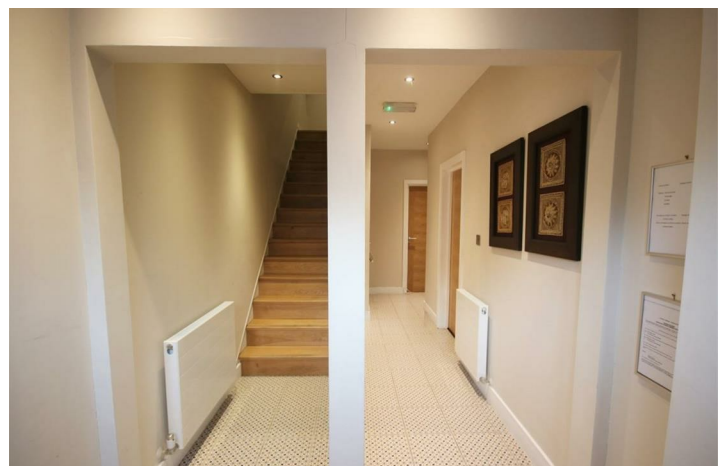
[property@jeremyleaf.co.uk](mailto:property@jeremyleaf.co.uk)  
<https://www.jeremyleaf.co.uk/>

# Rosemary Avenue, LONDON, N3 2QN

A DOUBLE ROOM with a shared bathroom to rent in a 6-bed SHARE HOUSE with communal, lounge, kitchen and garden. Conveniently located for public transport with Finchley Central tube Northern Line. Furnished and including gas, water, Council Tax ,electricity, TV licence and broadband. Available 2nd February.

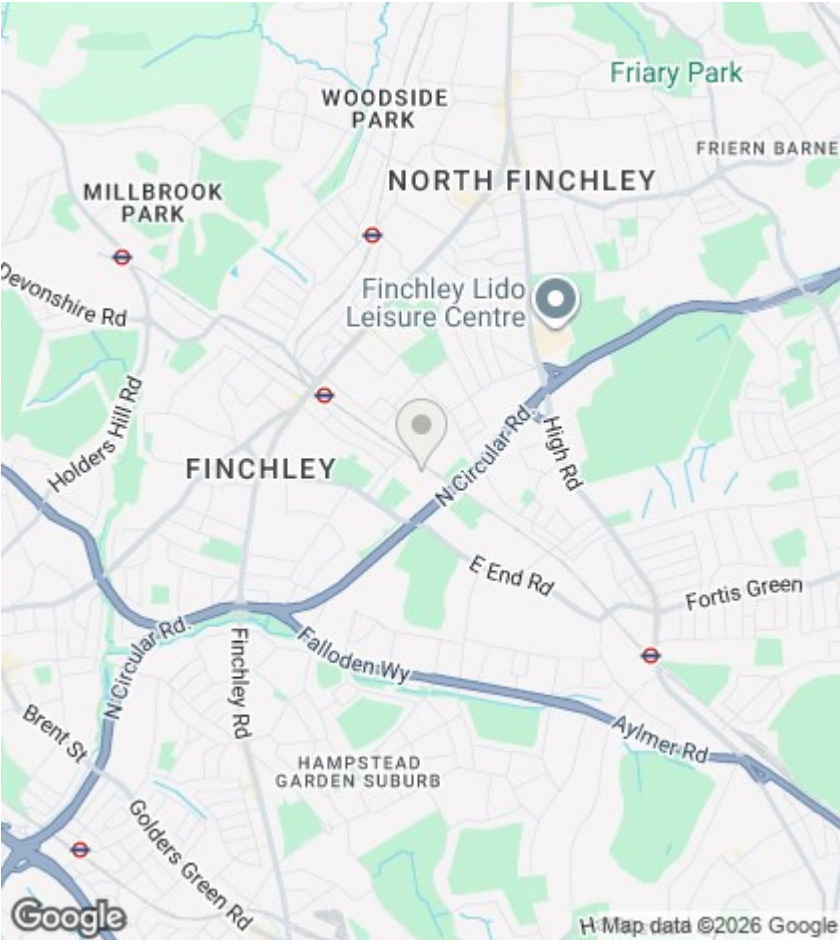


Council Tax Band: C









Directions

Viewings

Viewings by arrangement only. Call 020 8446 4295 to make an appointment.

EPC Rating:

Energy Efficiency Rating		
	Current	Potential
Very energy efficient - lower running costs		
(92 plus) A		
(81-91) B		
(69-80) C		
(55-68) D		
(39-54) E		
(21-38) F		
(1-20) G		
Not energy efficient - higher running costs		
England & Wales		EU Directive 2002/91/EC